

Rowe Referrals

The Veterinary Hospital

Bradley House, Ferndene

Bristol, BS32 9DT

Telephone 01454 521000

Fax 01454 521001

referrals@rowevetgroup.com

www.rowereferrals.co.uk

The Eye Clinic

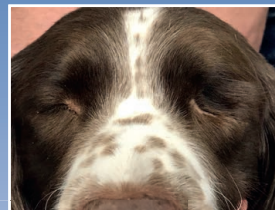
eyeclinic@rowevetgroup.com

eyes@rowevetgroup.com

Rowe

Referrals

Enucleation



 Find us on
Facebook

www.facebook.com/roweeyeclinic

www.facebook.com/roweveterinaryreferrals



Enucleation

Why does my pet's eye need to be removed?

Removal of an eye (enucleation) is generally required in the case of a blind and painful eye. Reasons may include severe trauma to the eye (which may render surgical repair impossible), chronic glaucoma (high pressure in the eye) which is not responsive to medical/surgical treatment or various types of cancer within or around the eye. We generally consider enucleation as a last resort after trying all other options. However, in some cases it is unavoidable.



What does the procedure entail?

Unfortunately, enucleation is a common procedure in dogs and cats. After a full pre-anaesthetic assessment, the procedure is performed under general anaesthesia. We use a technique to split the eyelid margin in order to maintain the eye lashes and tend to place a silicone implant in the eye socket in most cases to maintain facial profile. We aim to discharge our patients 6-24 hours after recovery, providing there are no signs of pain or discomfort.

Do I need to do anything after the operation?

Aftercare usually involves antibiotics and anti-inflammatories/painkillers as tablets or liquids. A head collar (Buster collar) may be necessary if your pet tries to scratch the wound. Stitch removal is not required as we generally use absorbable suture material, which will dissolve within a matter of weeks.

What are the risks involved?

There are the usual risks of general anaesthesia and surgery but most cases (99%) heal uneventfully after the procedure.



My pet will need to have both eyes removed, do I need to put him to sleep?

Absolutely not. Dogs and cats cope very well, even if they are completely blind. If both eyes were blind and painful you may notice an increase in quality of life once the eyes have been removed.

If you have any further questions regarding this or any other condition feel free to contact us.